



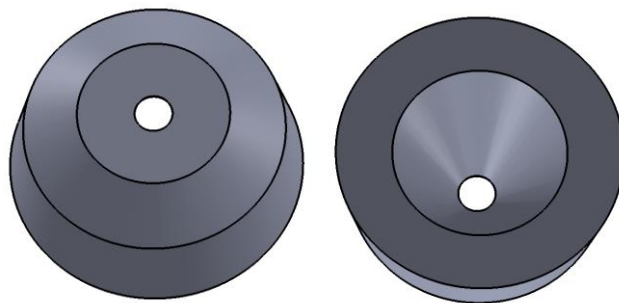
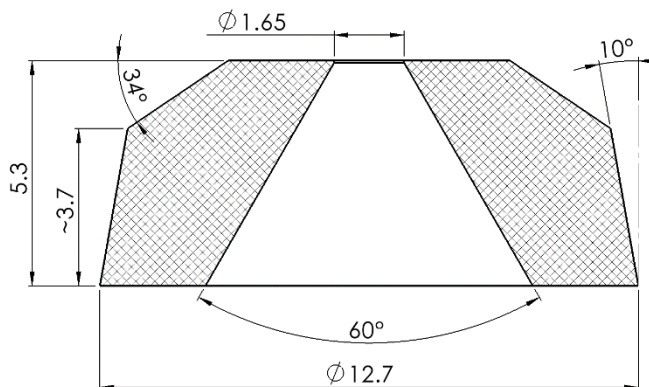
## Typical Flat WC / cBN Seats

DAC Tools manufactures and supplies a variety of different diamond seats from various materials (C2 grade Tungsten Carbide, cBN, polycrystalline diamond, BeCu C172, Vascomax, SS 440C, etc.). While we can make diamond seats of any typical size and shape (different height, diameter, opening and cone angle), there is a number of seats of common shape and size which we typically have in stock. Below are examples of the most common WC diamond seats.

### WCS-D05-H209-O065-C60-B34

Standard tungsten carbide (C2 grade) diamond anvil seat with 1.65 mm hole, typical for Standard Symmetric DAC with large diamonds.

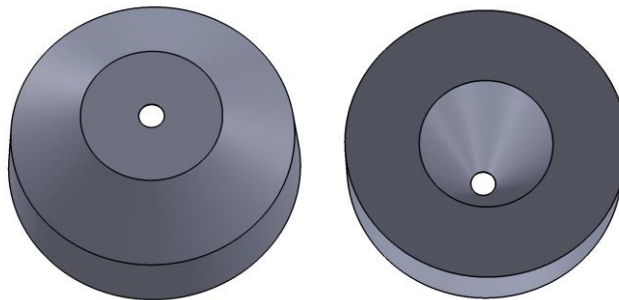
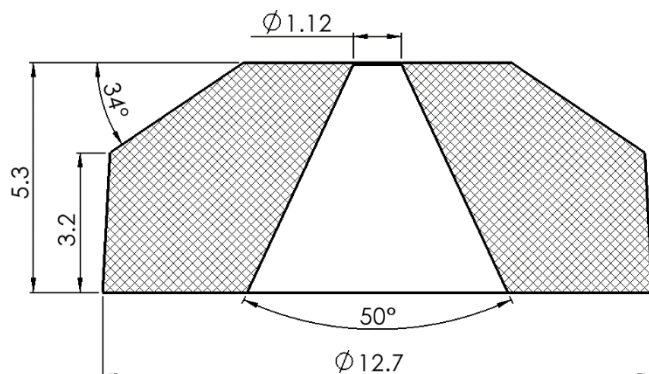
OD – 0.50", height – 0.209" (5.3 mm), bevel – 34°, Opening – 0.065" (1.65 mm), cone – 60°



### WCS-D05-H207-O044-C50-B34

Standard tungsten carbide (C2 grade) diamond anvil seat with 1.12 mm hole, typical for Standard Symmetric DAC with small diamonds.

OD – 0.50", height – 0.209" (5.3 mm), bevel – 34°, Opening – 0.044" (1.12 mm), cone – 50°





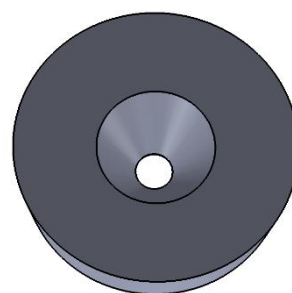
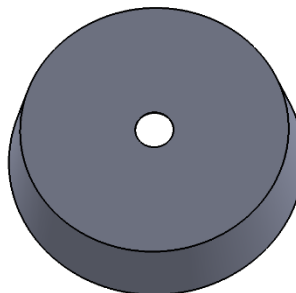
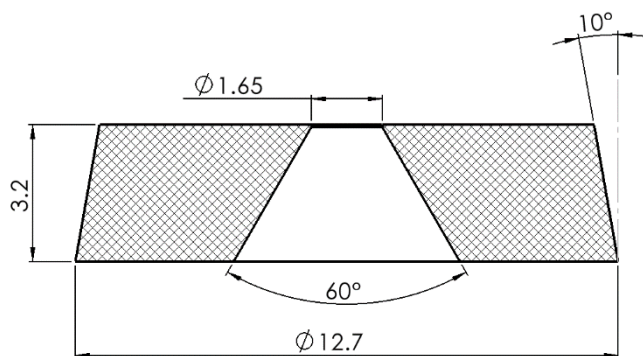
# DAC Tools

Custom Equipment for High-Pressure Research

## WCS-D05-H125-O065-C60

Short tungsten carbide (C2 grade) diamond anvil seat, typical for Short Symmetric / BX90 DAC.

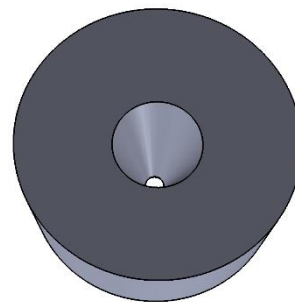
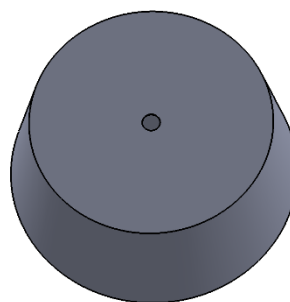
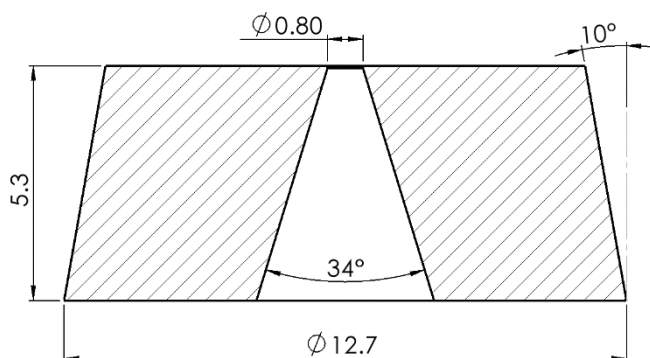
OD – 0.50", height – 0.125" (3.2 mm), Opening – 0.065" (1.65 mm), cone – 60°



## BNS-D12.7-H5.3-O0.8-C34

cBN (either with Ti/Al or Silicon Nitride binder) diamond anvil seat, typical for Standard Symmetric DAC.

OD – 12.7 mm (0.5"), height – 5.3 mm (0.209"), Opening – 0.8 mm (0.031"), cone – 34°



## Related equipment

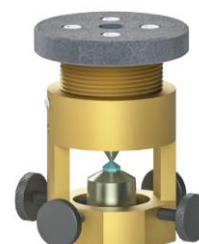
### Pressure controllers



### Diamond Anvil Cells



### DAC Accessories



For more information please visit <http://dactools.com/diamond-cells>



Dec. 2023